



  **formwise**
washrooms

butterfly

A stylish and hardworking cubicle system that creates a fun, safe and practical washroom.

butterfly

Toilet cubicles for little people need not be big scary places with our fun and safe washroom cubicles, designed specifically with their needs in mind.

With three different height doors and partitions Butterfly is suitable for use for Junior and Infant school children. Magnetic catches and pull handles can be used instead of indicator bolts for younger children. The cubicle fittings are manufactured from strong, polished aluminium and the cubicle panels can be supplied in MFC, HPL or SGL.

Features

- Polished aluminium furniture
- Suitable for wet and dry environments
- Anti finger trap hinges
- Fun choice of colours
- Easy Supervision

Details

1980mm overall height

160mm leg

1200/1500/1670mm door height

Options

Alternative door height

Alternative ground clearance

Fun screen print design to doors

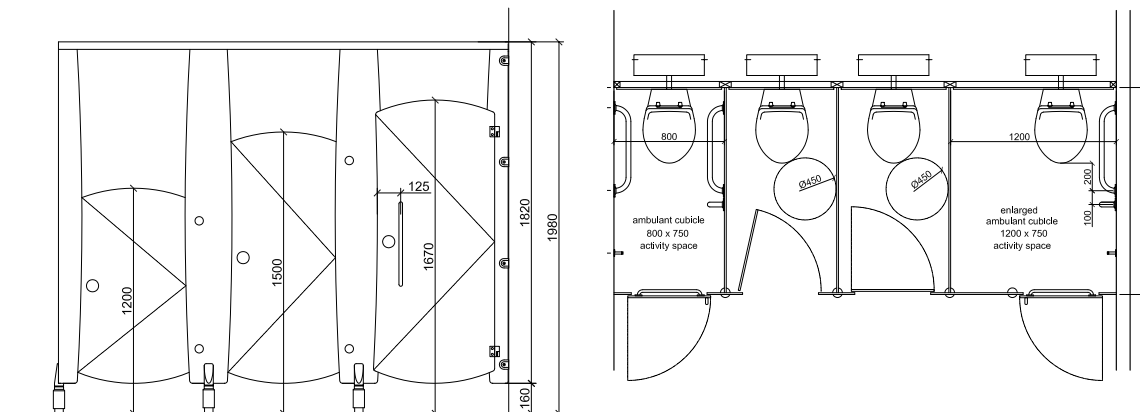
Note: All items can be supplied nationally on a supply only or supply and install basis. Installation is carried out by our fully qualified installation team.

Butterfly cubicles can be supplied to comply with the latest Building Regulations Part M & Disability Discrimination Act (DDA).

01933 405961

www.formwise-washrooms.co.uk

Formwise Washrooms Unit 3 Wendel Point, Ryle Drive,
Park Farm, Wellingborough, NN8 6BA



SYSTEM	PANEL SPECIFICATION				IRONMONGERY
	facing		substrate	edge detail	
	mr mfc laminare (hpl) solid grade laminate screen printed doors wood veneer metal laminate	mr chipboard mr mdf wbp plywood	2mm pvc laminare machined smooth hardwood polished (glass)	polished aluminium stainless steel	
Butterfly MFC	●		●	● s	
Butterfly HPL	● s	● s	● s	● s	
Butterfly SGL	● s		●	● s	

Non standard cubicle heights, materials and finishes are available upon request

KEY

mdf - medium density fibreboard
mfc - melamine faced chipboard
mr - moisture resistant
hpl - high pressure laminate
sgl - solid grade laminate
wbp - water and boil proof
s - special order

