



formwise
washrooms

ethos

Creative and sophisticated, ethos delivers a minimalist appearance by offering slimline features and using contemporary materials.

ethos

Slimline stainless steel cubicle pilasters and multiple material choices for both the doors and partitions make our Ethos cubicle a truly modern system.

Doors and partitions can be surfaced with HPL or FSC certified veneers or manufactured using SGL or toughened glass. The system is also available using a combination of materials, for example glass doors with SGL partitions.

Features

- Floating appearance
- Stainless steel furniture
- Wide choice of material options
- Suitable for wet and dry environments
- Minimal look and clean lines

Details

2010mm overall height

160mm leg

1820mm door / div / pil height

Options

Alternative overall height

Alternative ground clearance

Shower curtains and rails

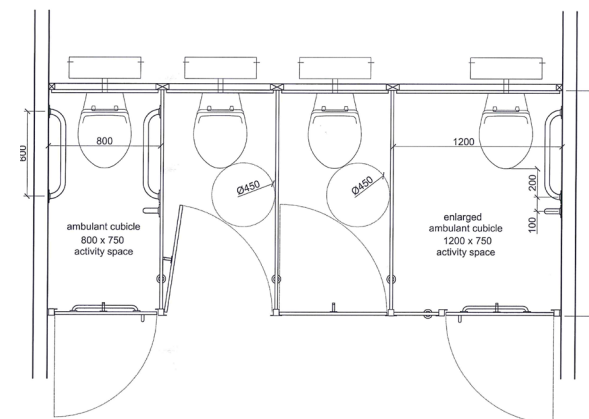
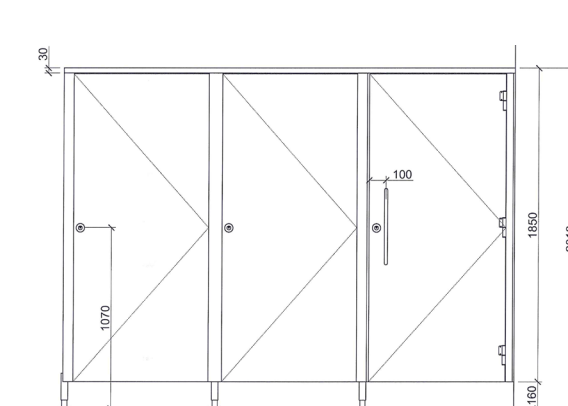
Note: All items can be supplied nationally on a supply only or supply and install basis. Installation is carried out by our fully qualified installation team.

Ethos cubicles can be supplied to comply with the latest Building Regulations Part M & Disability Discrimination Act (DDA).

01933 405961

www.formwise-washrooms.co.uk

Formwise Washrooms Unit 3 Wendel Point, Ryle Drive,
Park Farm, Wellingborough, NN8 6BA



SYSTEM	PANEL SPECIFICATION				IRONMONGERY
	facing	substrate		edge detail	
	mr mfc laminare (hpl) solid grade laminate screen printed glass wood veneer metal laminate	mr chipboard mr mdf wbp plywood		2mm pvc laminare machined smooth hardwood polished (glass)	polished aluminium stainless steel
Ethos MFC	●			●	●
Ethos HPL	●		●	● s	●
Ethos SGL	●			●	●
Ethos Veneer		●	●	●	●
Ethos Glass	●			●	●

Non standard cubicle heights, materials and finishes are available upon request

KEY

mdf - medium density fibreboard
mfc - melamine faced chipboard
mr - moisture resistant
hpl - high pressure laminate
sgl - solid grade laminate
wbp - water and boil proof
s - special order

