



formwise
washrooms

function

Economical and durable, function provides style, a wide range of colours and high quality ironmongery.

function

When budget is the driving factor our Function range of cubicles is the ideal solution.

Available in a vast range of over 50 different colours, including woodgrains and using our high quality polished aluminium cubicle fittings, Function is a practical and suitable solution.

Two panel performance options and two different edge detail options are available on the Function cubicle resulting in a system that is flexible enough to be used in many situations and economical enough to meet most budgets.

Features

- Polished aluminium furniture
- Wide choice of colours
- Through fixed hinges
- Economical
- Anti finger trap doors
- Made to measure

Details

1980mm overall height

160mm leg

1820mm door / div / pil height

Options

Alternative overall height

Alternative ground clearance

Postformed/impact PVC edges

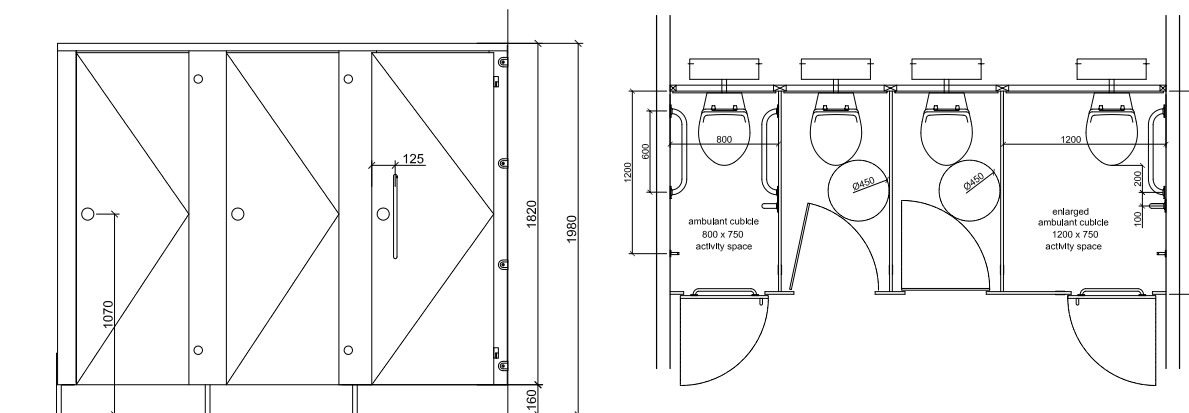
Note: All items can be supplied nationally on a supply only or supply and install basis. Installation is carried out by our fully qualified installation team.

Function cubicles can be supplied to comply with the latest Building Regulations Part M & Disability Discrimination Act (DDA).

01933 405961

www.formwise-washrooms.co.uk

Formwise Washrooms Unit 3 Wendel Point, Ryle Drive,
Park Farm, Wellingborough, NN8 6BA



SYSTEM	PANEL SPECIFICATION				IRONMONGERY
	facing	substrate	edge detail		
	mr mfc laminare (hpl) solid grade laminate screen printed glass wood veneer metal laminate	mr chipboard mr mdf wbp plywood	2mm pvc laminare postformed (pilasters) hardwood polished (glass)		polished aluminium stainless steel
Function	●		●		● s
Function+	●	s	● s		● s
Function+pf	●	● s	● ●	●	● s

Non standard cubicle heights, materials and finishes are available upon request

KEY

mdf - medium density fibreboard
mfc - melamine faced chipboard
mr - moisture resistant
hpl - high pressure laminate
sgl - solid grade laminate
wbp - water and boil proof
s - special order

