



formwise
washrooms

hoxton

A seamless flush facade creates an ultra-modern cubicle that remains surprisingly affordable.

hoxton

The floating appearance and flush frontage on our Hoxton cubicle is a clear design statement. 13mm thick rebated pilasters and doors combined with high quality stainless steel cubicle fittings makes this sleek luxurious cubicle that remains surprisingly affordable. Available on short lead times to suit tight deadline projects.

Features

- Floating appearance
- Stainless steel furniture
- Flush fronted
- Suitable for wet and dry environments
- Clean lines and minimal look

Details

2000mm overall height

160mm leg

1820mm door/div/pil height

Options

Alternative height

Alternative ground clearance

Shower curtains and rails

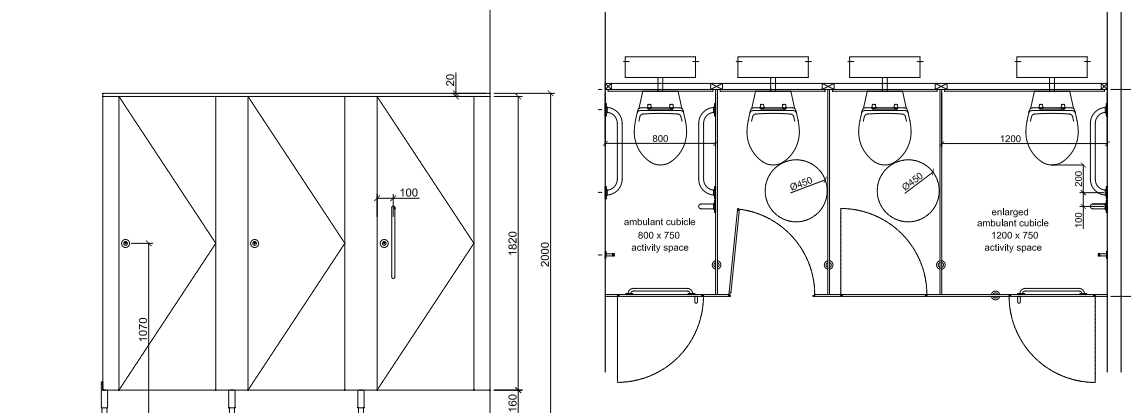
Note: All items can be supplied nationally on a supply only or supply and install basis. Installation is carried out by our fully qualified installation team.

Hoxton cubicles can be supplied to comply with the latest Building Regulations Part M & Disability Discrimination Act (DDA).

01933 405961

www.formwise-washrooms.co.uk

Formwise Washrooms Unit 3 Wendel Point, Ryle Drive,
Park Farm, Wellingborough, NN8 6BA



SYSTEM	PANEL SPECIFICATION			IRONMONGERY
	facing	substrate	edge detail	
	mr mfc laminare (hpl) solid grade laminate screen printed glass wood veneer metal laminate	mr chipboard mr mdf wbp plywood	2mm pvc laminare rebated hardwood polished (glass)	polished aluminium stainless steel
Hoxton	●		●	●

Non standard cubicle heights, materials and finishes are available upon request

KEY

mfd - medium density fibreboard
mfc - melamine faced chipboard
mr - moisture resistant
hpl - high pressure laminate
sgl - solid grade laminate
wbp - water and boil proof
s - special order

