



formwise
washrooms

hoxton tall

A seamless flush facade creates an ultra-modern cubicle that remains surprisingly affordable.

hoxton tall

The floating appearance and flush frontage on our Hoxton Tall cubicle is a clear design statement. 13mm thick rebated pilasters and doors combined with high quality stainless steel cubicle fittings makes this sleek luxurious cubicle that remains surprisingly affordable. Available on short lead times to suit tight deadline projects.

Features

- Floating appearance
- Stainless steel furniture
- Flush fronted
- Suitable for wet and dry environments
- Clean lines and minimal look

Details

Up to 2800mm overall height
20mm ground clearance

Options

Door overpanels

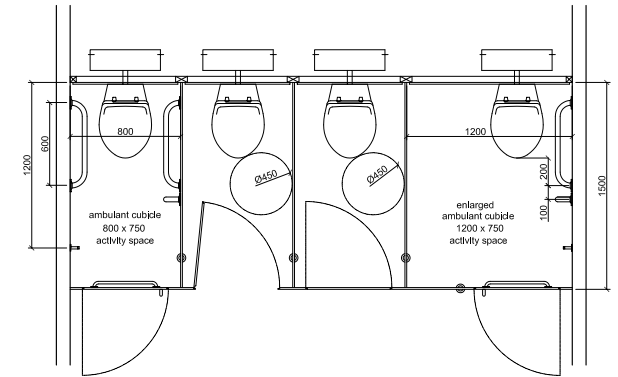
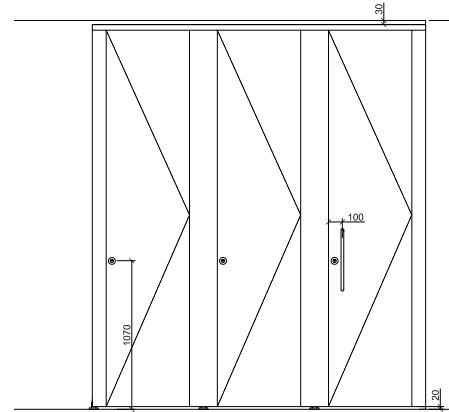
Note: All items can be supplied nationally on a supply only or supply and install basis. Installation is carried out by our fully qualified installation team.

Hoxton Tall cubicles can be supplied to comply with the latest Building Regulations Part M & Disability Discrimination Act (DDA).

01933 405961

www.formwise-washrooms.co.uk

Formwise Washrooms Unit 3 Wendel Point, Ryle Drive,
Park Farm, Wellingborough, NN8 6BA



SYSTEM	PANEL SPECIFICATION			IRONMONGERY
	facing	substrate	edge detail	
Hoxton	mr mfc laminate (hpl) solid grade laminate screen printed glass wood veneer metal laminate	mr chipboard mr mdf wbp plywood	2mm pvc laminate rebated hardwood polished (glass)	polished aluminium stainless steel

Non standard cubicle heights, materials and finishes are available upon request

KEY

- mdf - medium density fibreboard
- mfc - melamine faced chipboard
- mr - moisture resistant
- hpl - high pressure laminate
- sgl - solid grade laminate
- wbp - water and boil proof
- s - special order

